

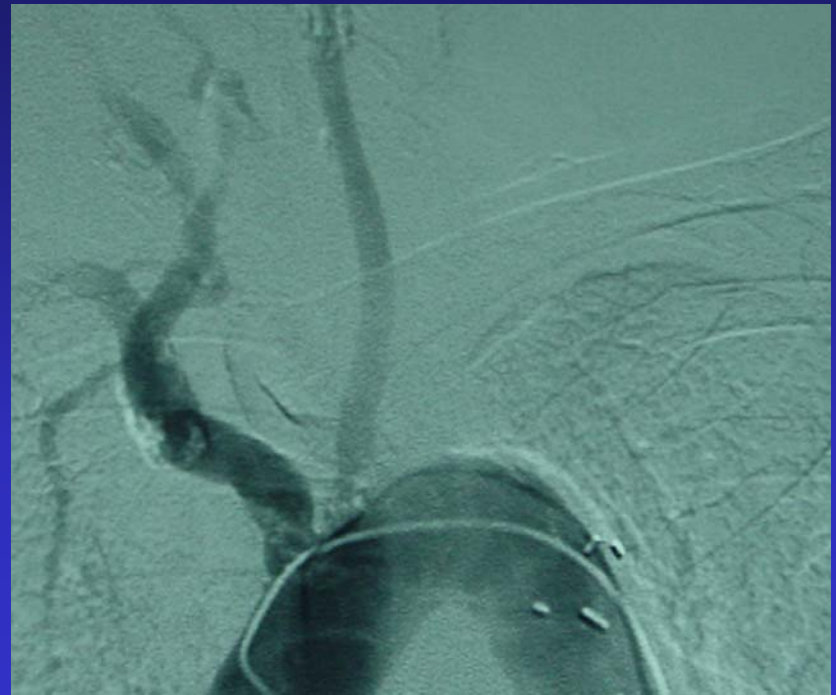
Subclavian Artery Occlusion

- History: 85 year-old female with suddenly ischemic left arm. Angiogram reveals occluded left subclavian artery.
- Treatment: Thrombolysis, PTA and stent placement.
- Recovery: Home in two days.
- Outcome: Complete resolution of symptoms

Subclavian Artery Occlusion

Initial Angiogram

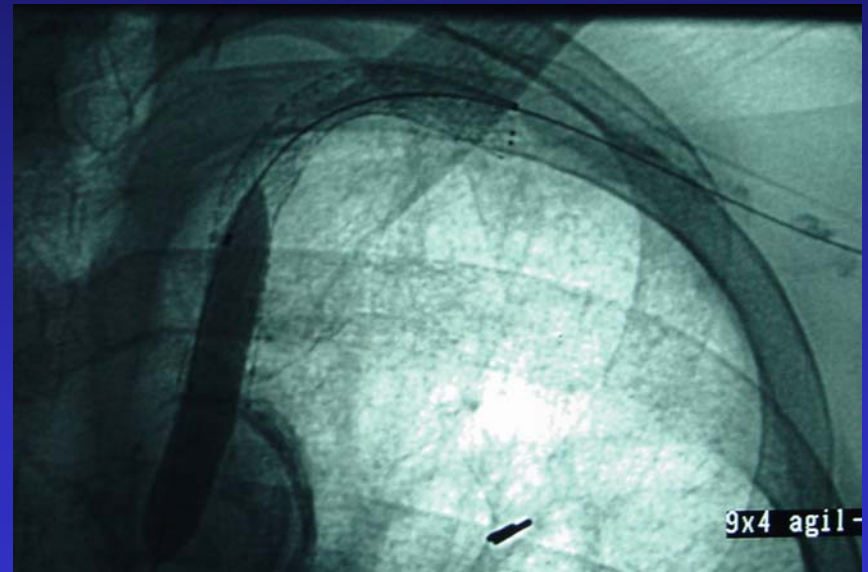
- **Note total occlusion of left subclavian artery**
- **Patient was told amputation was inevitable**
- **Transferred to Delnor for second opinion**



Subclavian Artery Occlusion

PTA and Stent Placement

- **Mechanical thrombectomy was performed using the Angiojet catheter**
- **Stents were placed in diseased segments of artery**



Subclavian Artery Occlusion

Before and After Comparison

