

Inferior Mesenteric Artery Stenosis

- **History**: 60 year old female with severe post-prandial abdominal pain and weight loss. Occluded celiac axis and SMA. Severe stenosis of IMA origin.
- **Treatment**: PTA and stenting of the IMA.
- **Recovery**: Home the next day.
- **Outcome**: Complete resolution of symptoms.

Inferior Mesenteric Artery Stenosis

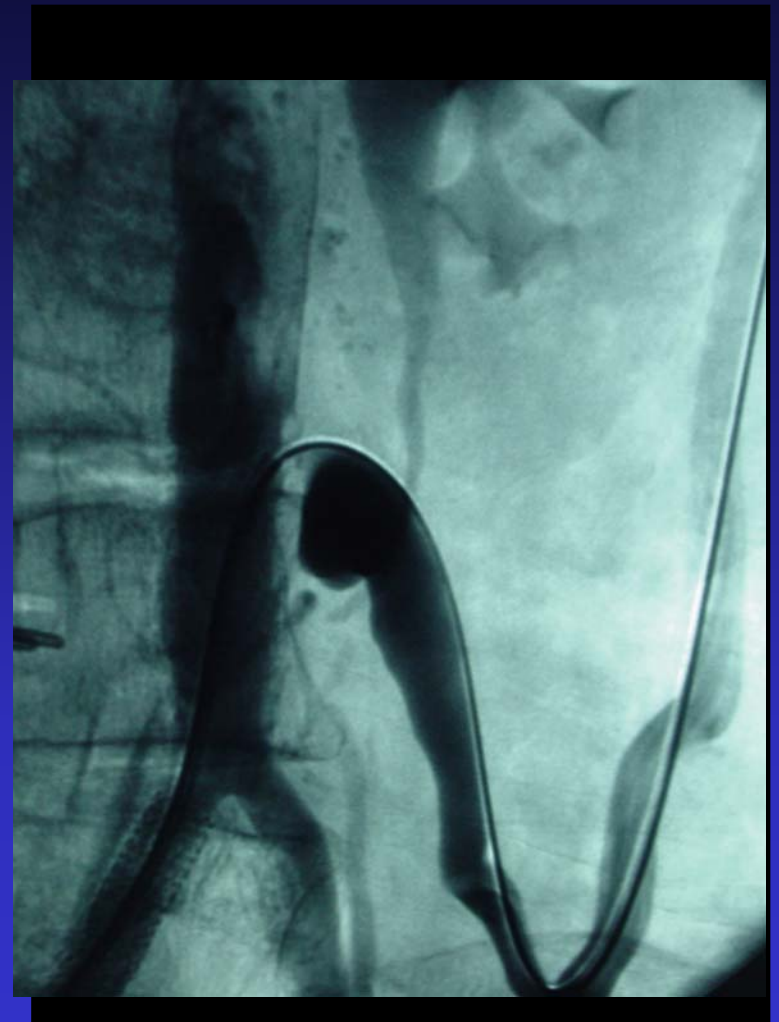
Initial MRA

Note the absence of the celiac artery and superior mesenteric artery, and the enlarged inferior mesenteric artery



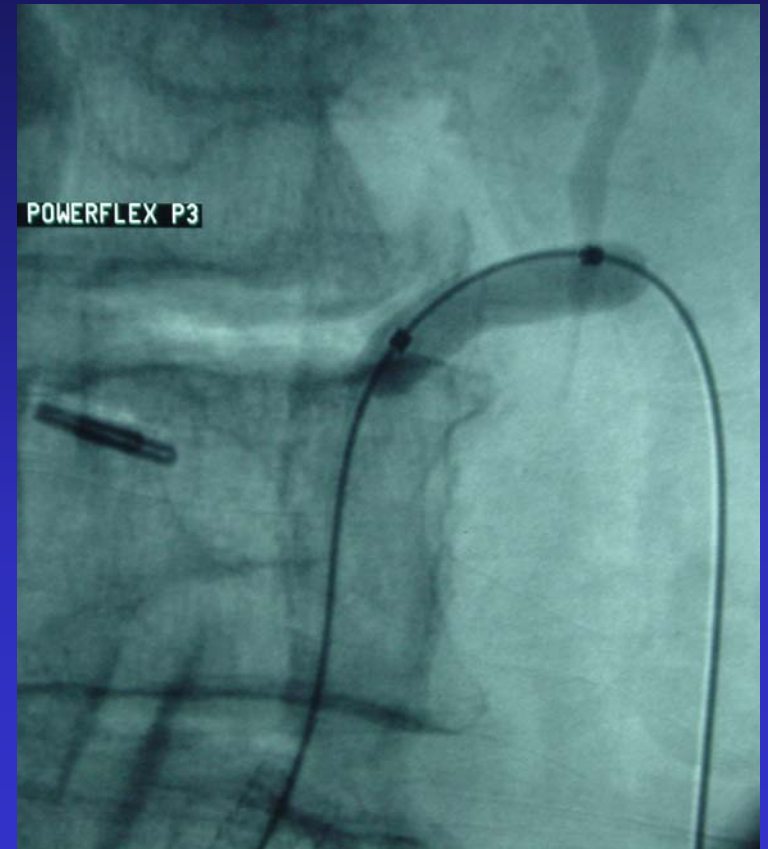
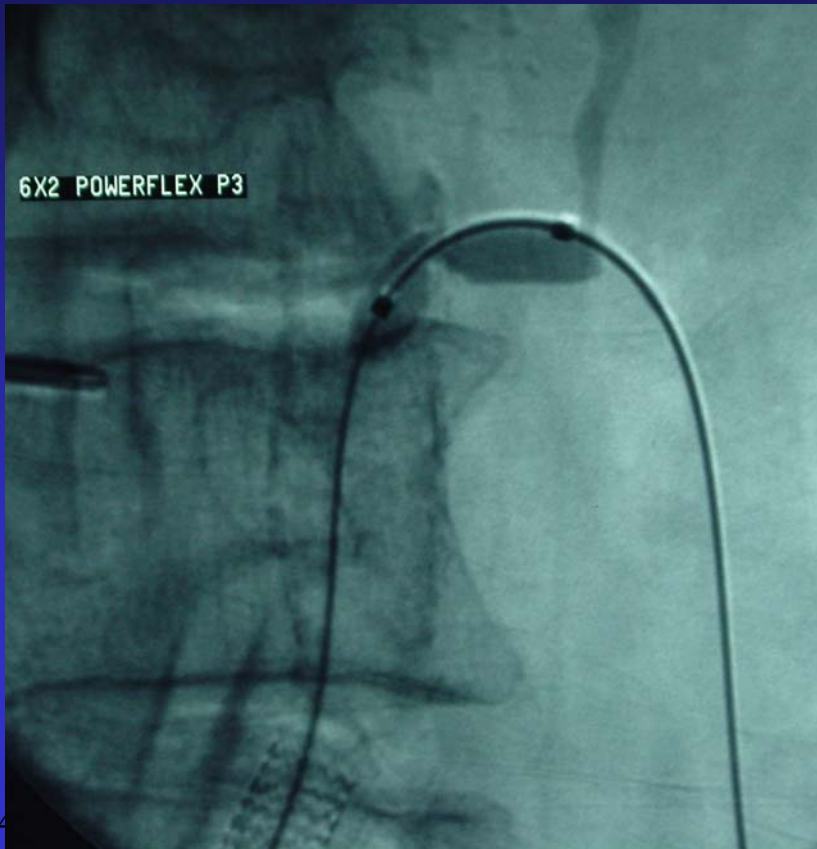
Inferior Mesenteric Artery Stenosis

Angiogram



Inferior Mesenteric Artery Stenosis

Angioplasty



Inferior Mesenteric Artery Stenosis

Before and After Comparison

